



MINERVA

USB 3.1 Gen 2 for mSATA SSD, M.2 SSD & CFast Card with Micro-B

Performance & Burn In Test Rev. 1.0

Table of Contents

1. Overview

2. Performance Measurement Tools and Results
 - 2.1 Test Platform
 - 2.2 Test target and use mSATA SSD
 - 2.3 Install Hardware
 - 2.4 BIOS & Windows 10 OS environment setup
 - 2.5 CrystalDiskMark 3.02 performance test
 - 2.6 AS SSD Benchmark 1.9 performance test
 - 2.7 ATTO Disk Benchamrk 2.47 performance test
 - 2.8 AnvilBenchmark_V110_B337 Benchmark performance test

3. Burn In Tests and Results
 - 3.1 BurnInTestv8.1 Pro burn in test

4. Summary

USB 3.1 Micro-B for mSATA SSD, M.2 SSD & CFast Card adapter

1. Overview

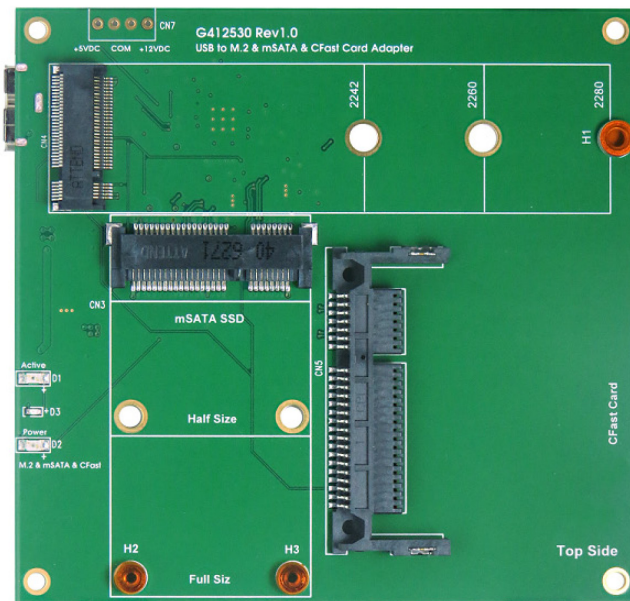
U4345A adapter, built-in USB3.1 Micro-B connectors, provides one CFast connector, one M.2 B-key connector and one Mini PCI-e connector. First inserts CFast card into CFast connector, using USB A-type to Micro-B cable to connect to the host USB 3.1 A-port, mSATA SSD can work.

2. Tools and Results of Performance Measurement

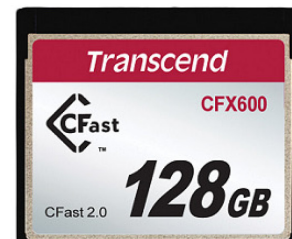
2.1 Test Platform:

M/B : GIGABYTE **Z170X UD5 TH**
CPU : Intel **i5-6500**, 3.2GHz/ 6M Cache/ LGA1150
Memory : Kingston **KVR21N15D8/8**, **DDR4-2133MHz**, 8G(8GB DIMM*2)
ATX Power : FSP RAIDER 550, **550W ATX**, 12V V2.2 Power Supply
Graphic : Z170 Chipsets built-in **HD Graphics 530**
Adapter: USB 3.1+Micro-B to mSATA, M.2, CFast adapter
CABLE: A-type to micro-B USB 3.1 cable
OS : Microsoft **Windows 10 64bit OS**

2.2 Test target: U4345A adapter and CFast 128GB(Trancend [TS128GCFX600](#))



U4345A Adapter



Samsung CM871a M.2 SSD

2.3 Install Hardware

Inserts CFast card into U4345A adapter's CFast connector, Then this adapter through USB cable to connect to USB3.1 port of GIGABYTE **Z170X UD5 TH**.

2.4 BIOS & Windows 10 OS environment setup

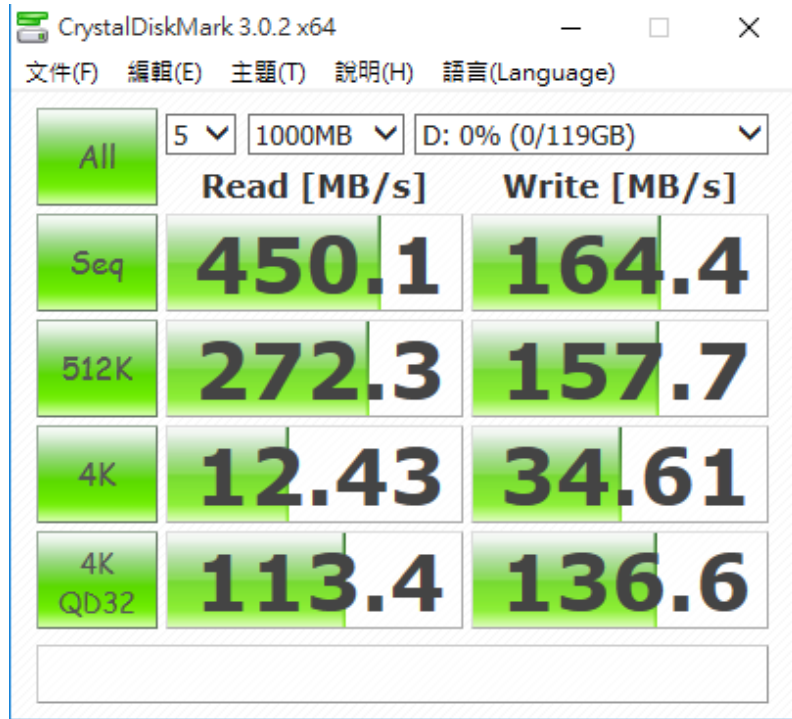
2.4.1 U4345A adapter formatted NTFS.

USB 3.1 Micro-B for mSATA SSD, M.2 SSD & CFast Card adapter

2.5 CrystalDiskMark 3.0.2 x64 performance test

※Benchmark (Sequential **Read & Write** / default = **1MB**)

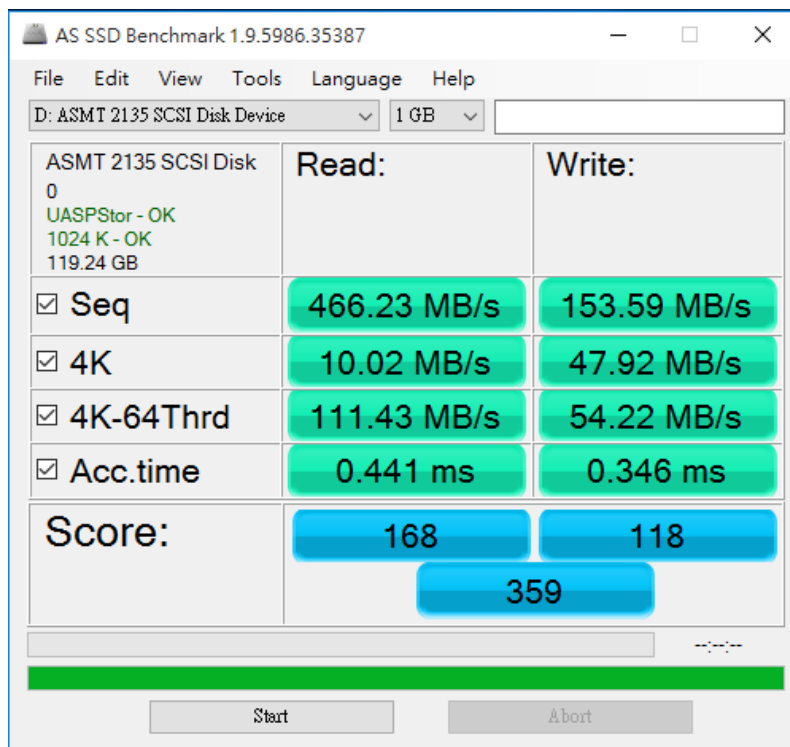
2.5.1 show mSATA SSD(LITE-ON [S930/256GB](#)) performance as below:



2.6 AS SSD Benchmark 1.9 performance test

※Benchmark (**Read & Write** by MB/s, default block size = **16MB**)

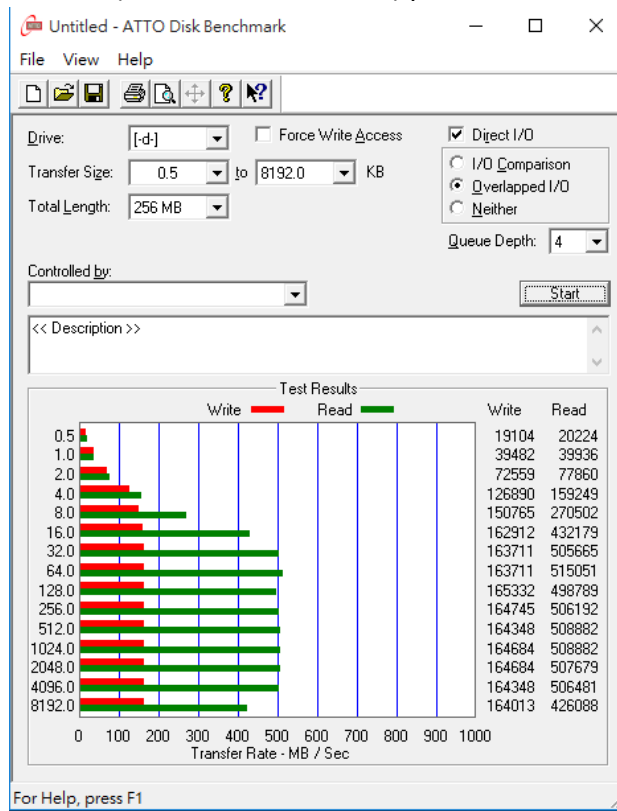
2.6.1 show mSATA SSD(LITE-ON [S930/256GB](#)) performance as below:



USB 3.1 Micro-B for mSATA SSD, M.2 SSD & CFast Card adapter

2.7 ATTO Disk Benchmark 2.47 performance test

2.7.1 show mSATA SSD(LITE-ON S930/256GB) performance as below:



2.8 AnvilBenchmark_V110_B337

2.8.1 show mSATA SSD(LITE-ON S930/256GB) performance as below:

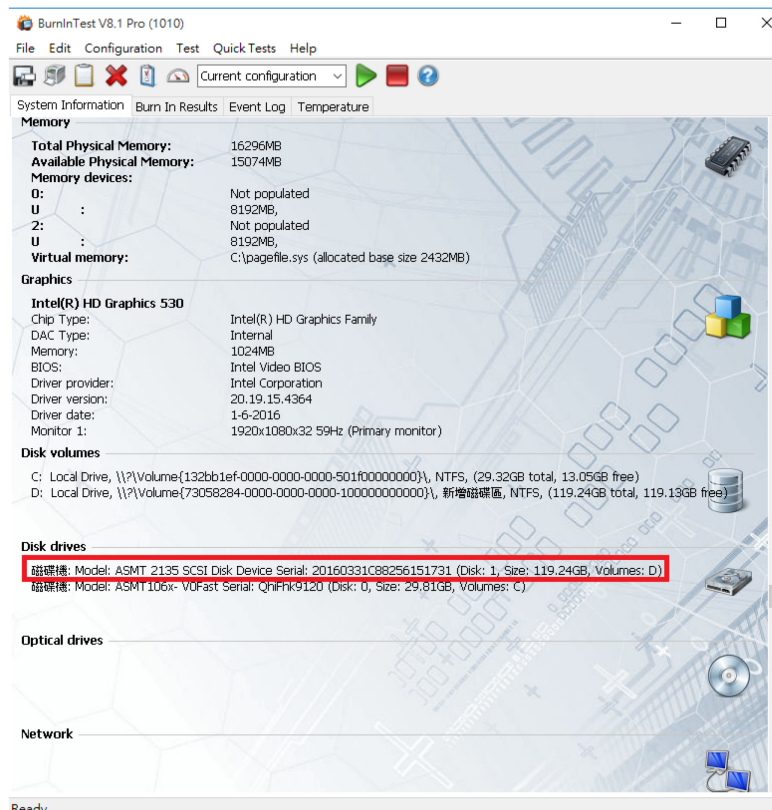
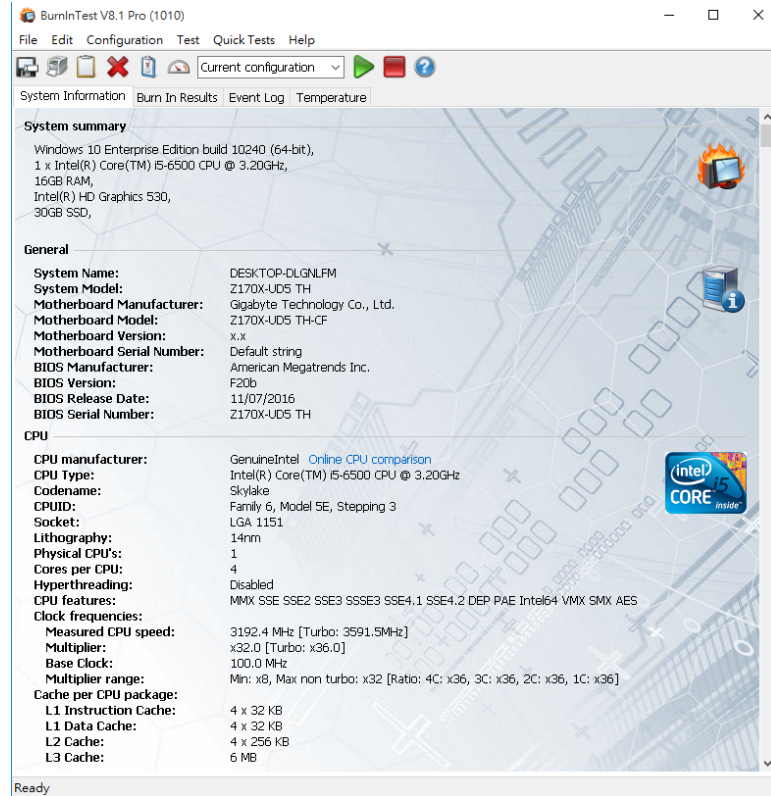


USB 3.1 Micro-B for mSATA SSD, M.2 SSD & CFast Card adapter

3. Burn In Tests and Results

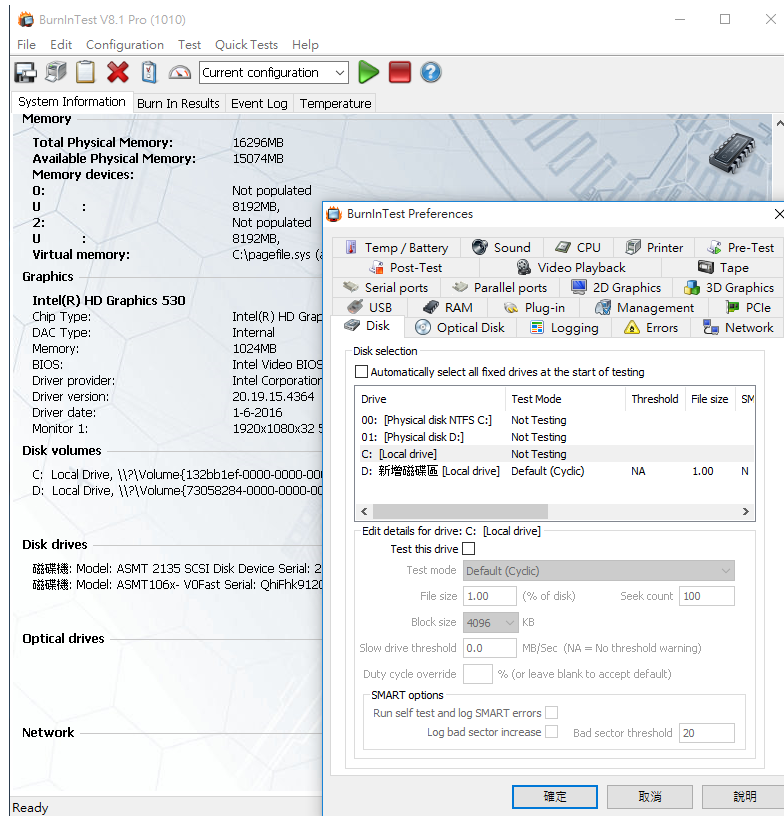
3.1 BurnInTest v8.1 Pro

3.1.1 **system information** for mSATA SSD(LITE-ON S930/256GB) as below:

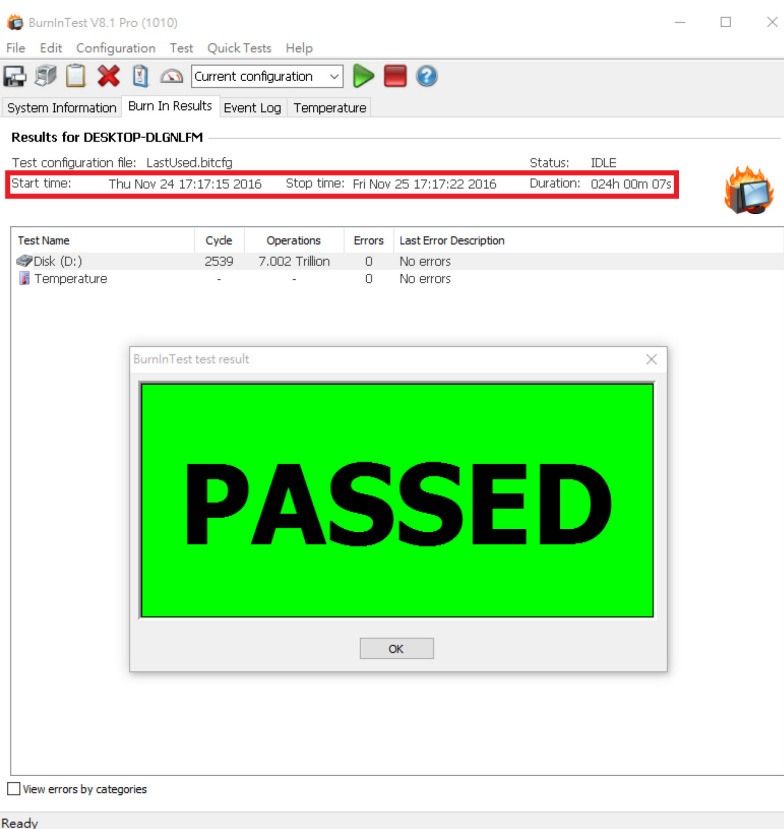


USB 3.1 Micro-B for mSATA SSD, M.2 SSD & CFast Card adapter

3.2.2 show Disk test mode(10 ways cycle test)



3.1.3 show 24-hour Burn-in test PASSED



USB 3.1 Micro-B for mSATA SSD, M.2 SSD & CFast Card adapter

4. Summary

- 4.1 USB 3.1 is 10Gbps Interface.
- 4.2 SATA III is 6Gbps Interface.
- 4.3 CFast card is SATA III Interface, I/O speed, max. to 600MB/s.
- 4.4 U4345A enclosure I/O performance is based on CFast card.